

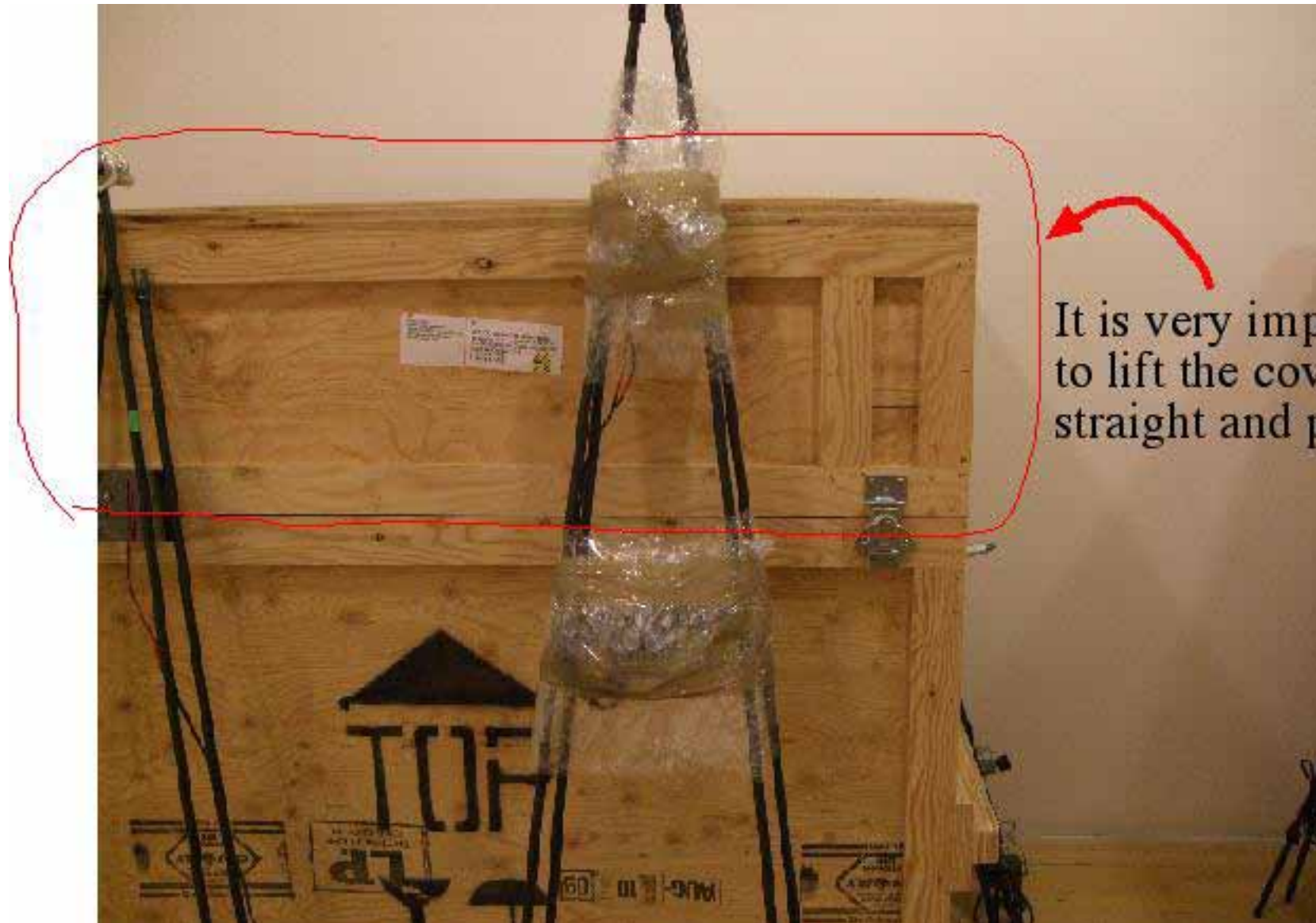
INSTRUCTION TO TAKE A PART THE PROJECT:

Knight of Infinite resignation

Contact information for any question:

www.dianelandry.com





It is very important
to lift the cover
straight and parallel.



Unplug all electricity around the installation. The whole connection cables are mine.

01



Remove all "Slip Rings" by slipping them from the axis.

05



Remove from frames all power supplies and pack them.

09

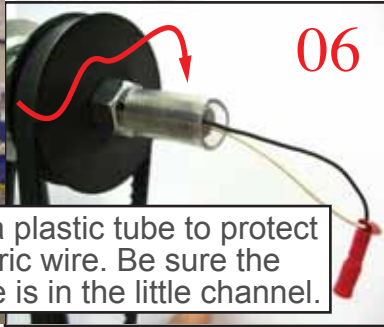


Put cables and plugs in the cardboard box.

02



"Slip Ring"



Put a plastic tube to protect electric wire. Be sure the cable is in the little channel.

06



10



The cardboard box is in the long wooden crate.

03



Wrap each "Slip Ring" carefully with plastic bubbles.

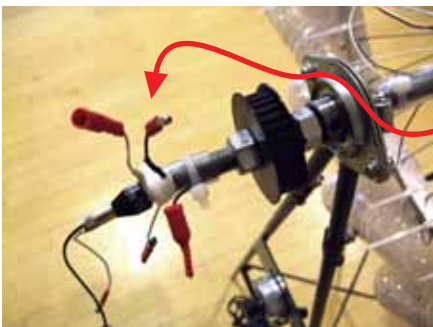
IMPORTANT : NO EMPTY SPACE.

07



Next step is to remove all timing belts .

11



Unplug all "Slip Rings". To disconnect the red connection, you have to hold each side and twist.

04



The cardboard box is in the long wooden crate.

08



Unscrew a little the motor to make a loose tension on the belt. Remove the belt.

12



Keep each belt with the frame it comes from.

13



From the stand, remove the nut with the lock washer. Work with wrench: 7/16.

17



Hold the wheel from the axis.

21



Remove the wheel from the stand. You have to be 2 persons.
IMPORTANT: START WITH SMALL WHEELS

14



Now, the stand is fragile without the nuts.

18



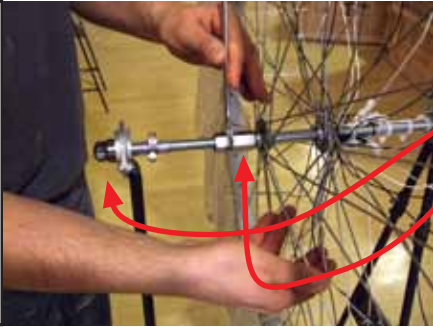
Lean the wheel against 2 smallest crates.

22



You have to associate 2 wheels together by number.

15



Work with 2 wrenches 3/4. You will find wrenches in the wooden crate.

19



You have some spacing between the 2 crates.

23



You will find the appropriate association number in the wooden crate.

16



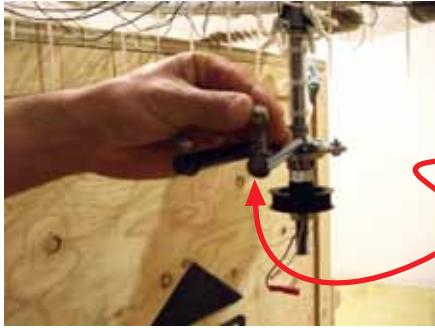
When the 2 nuts are loose, you can remove the wheel from the stand.

20



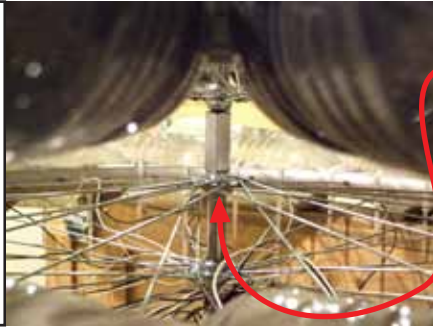
The leaving space is for the wires and zip wraps around the wheel.

24



Screw back nuts and washers on the stand.

25



Long nut between 2 wheels. Do not force to screw too tight. When it stops, STOPS.

29



Tape the aluminum rod to the wooden support to be sure it does not move during the

33



For now, leave the stand.

26



Unscrew the wooden piece.

30



Put the 2 wheels attached together in the wooden crate.

34



Detach the associate wheel from the stand.

27



Be sure the 2 wheels axes are support in the middle by the wooden frame.

31



Make sure the little wires are free and the axis is protected by the transparent plastic tube.

35



Screw with a long nut the second wheel to the first waiting wheel. This operation is very delicate.

28



Move the aluminum rod to block the 2 wheels in the middle.

32

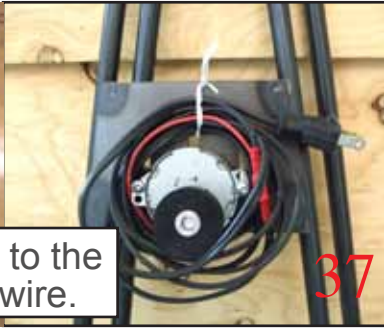


Put back the piece of wood on the top and screw.

36



Last, pack the steel stands.



Attach to the frame wire.

37



Put each stand together with the "X". When you wrap the stand, pack the "X" with.

41



Finish by extra plastic bubbles wrapping. And, add the cardboard boxes.

45



Lay on the floor the stand.

38



Wrap each stand together with plastic bubbles. Protect motors with bubbles. Tape tight with saran wrap.

42



When you close the crate, be sure to associate all red mark fits all together

46



At each corner, loose the set screw with Allen key.

39



43



Put 1 zipper plastic wrap to secure each attaches. Tape the identification of the return address on

47



Remove each "X" from the stand. You may need to work with a pick and mallet.

40



Put many levels of stands with plastic bubbles in between.

TOTAL : 12 steel stands. 44

THANKS !!!

48 5/5